

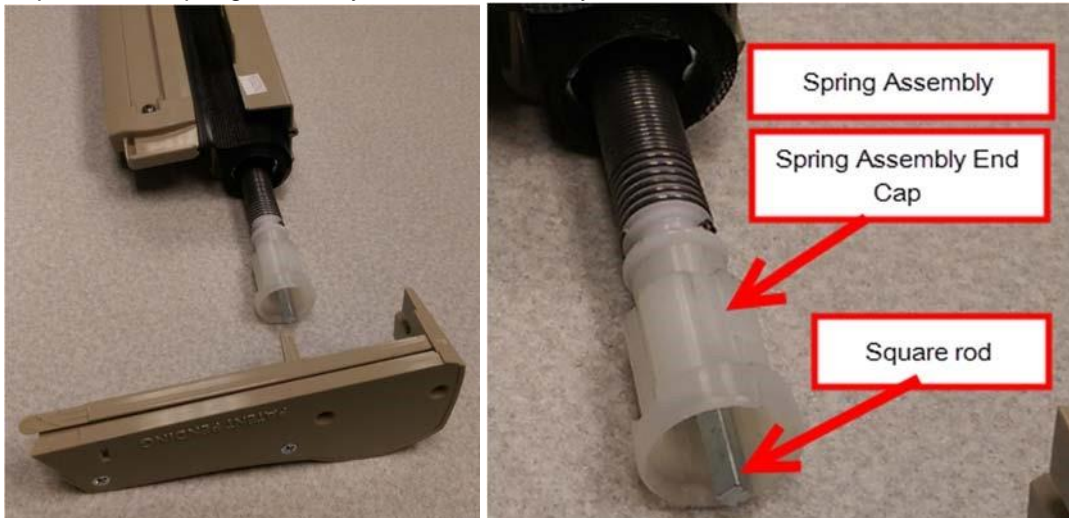
Brisa Retractable Screen Door: Tensioning Instructions

- Step 1: Remove BRISA unit from door frame (wood screw x4)
- Step 2: Disconnect tracks from screen housing
- Step 3: Place screen housing on long flat surface (TIP: Place rug under screen housing to protect paint)
- Step 4: Remove end cap from screen housing that is left of the ODL logo on the handle when reading the logo right side up.



Step 3 and 4: Note orientation of components. Patent pending label may or may not appear.

- Step 5: Slide off the end cap (CAUTION: Some movement and noise from spring unwinding may occur)
- Step 6: Pull spring assembly out of the barrel by 2 to 4 inches



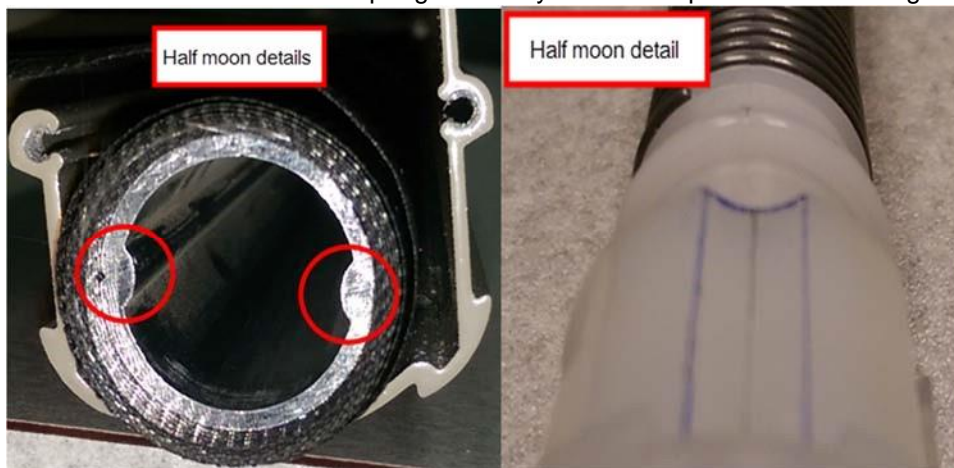
Brisa Retractable Screen Door: Tensioning Instructions

Step 7: Slide end cap back on square rod of spring assembly and hold components together

Step 8: Rotate end cap clockwise for desired tension (TIP: suggested tension is 33-40 revolutions when starting with no tension) Do not tighten more than 40 revolutions.

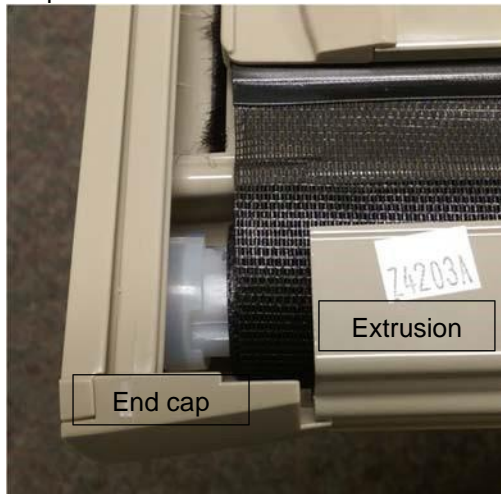


Step 9: Align the half-moon shaped details on the white spring end cap with the barrel half-moon details and reinsert spring assembly and end cap to screen housing



Brisa Retractable Screen Door: Tensioning Instructions

Step 9: continued



Step 10: Re-attach end cap (machine screw x 2)



Step 11: Re-install screen housing to tracks

Step 12: Re-mount BRISA unit on door frame (wood screw x4)